









Adam Hayes - North Finchley Office - Lettings 365 Ballards Lane, North Finchley, London, N12 8LL

Tel: 020 8445 4008 Email: [info@adam-hayes.co.uk](mailto:info@adam-hayes.co.uk) Web: [www.adam-hayes.co.uk](http://www.adam-hayes.co.uk)

Torrington Park, North Finchley, N12 9PN

£1,750 PCM

 2 Bedrooms  1 Bathrooms  1 Receptions

## Key Features

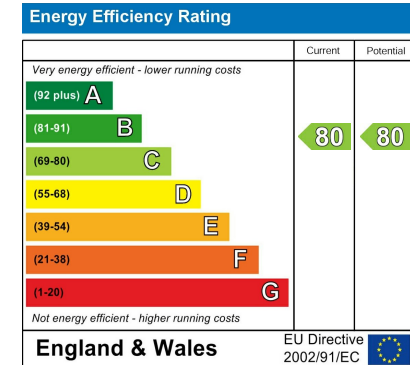
- Two Double Bedrooms
- 20ft Reception
- Modern Kitchen
- Wooden Flooring
- Unfurnished
- Great Location

## Other Information

Council Tax Band: D

Length of Tenancy: Long Let

Deposit: £2,019



## Nearest Stations

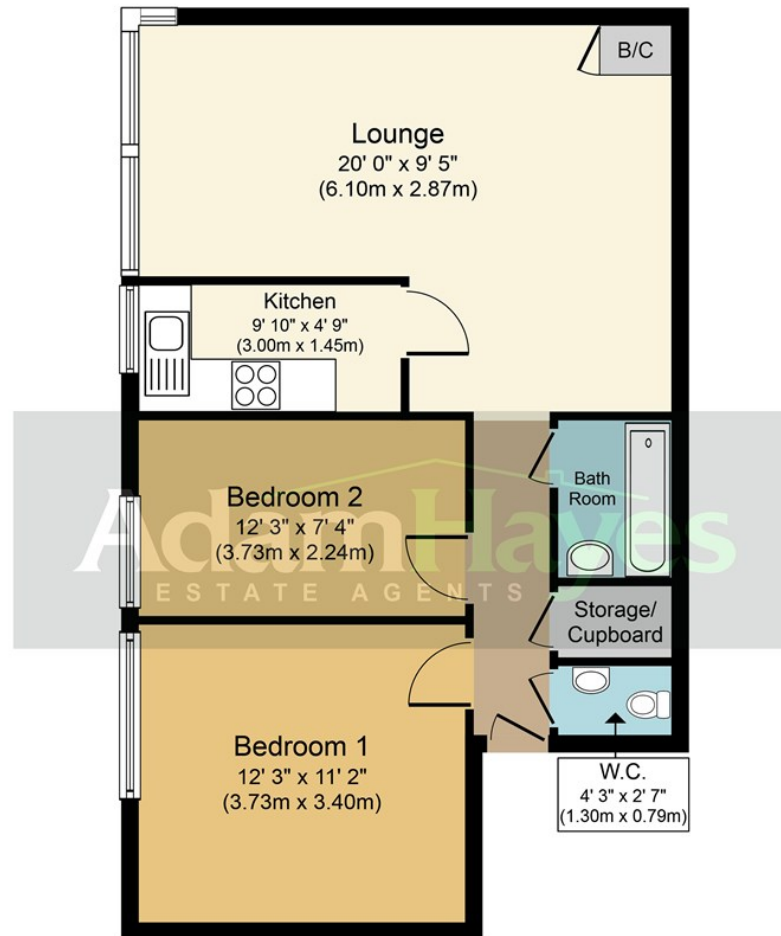
- Woodside Park
- West Finchley

## Property Description

A modern two double bedroom first floor purpose built flat situated in this popular location within easy access of North Finchley High Road and local amenities. The property benefits from an approximately 20ft reception, modern kitchen, gas central heating, double glazing, wooden flooring and a separate WC. Ideal for a couple or two friends. To really appreciate the size, location and condition an internal viewing is highly recommended via the landlord's sole agents.

Adam Hayes - North Finchley Office - Lettings 365 Ballards Lane, North Finchley, London, N12 8LL

Tel: 020 8445 4008 Email: [info@adam-hayes.co.uk](mailto:info@adam-hayes.co.uk) Web: [www.adam-hayes.co.uk](http://www.adam-hayes.co.uk)



## First Floor Flat

**Approx Gross. Internal Floor Area 619 sq. ft. (57.5 sq. m.)**

Whilst every attempt has been made to ensure the accuracy of the floor plan contained here, measurements of doors, windows, rooms and any other items are approximate and no responsibility is taken for any error, omission, or mis-statement. This plan is for illustrative purposes only and should be used as such by any prospective purchaser or tenant. The services, systems and appliances shown have not been tested and no guarantee as to their operability or efficiency can be given.  
Copyright V360 Ltd 2017 | [www.houseviz.com](http://www.houseviz.com)

These particulars, whilst believed to be accurate, are set out as a general outline only for guidance and do not constitute any part of an offer or contract. Intending purchasers or prospective tenants should not rely on them as statements or representation of fact, but must satisfy themselves by inspection or otherwise as to their accuracy. We have not carried out a detailed survey, not tested the services, appliances and specific fittings. Room sizes should not be relied upon for carpets and furnishings. The measurements given are approximate. No person in this firm's employment has the authority to make or give any representation or warranty in respect of the property.